

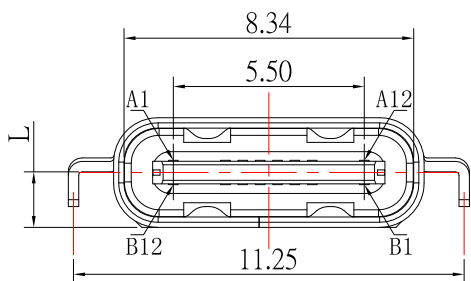
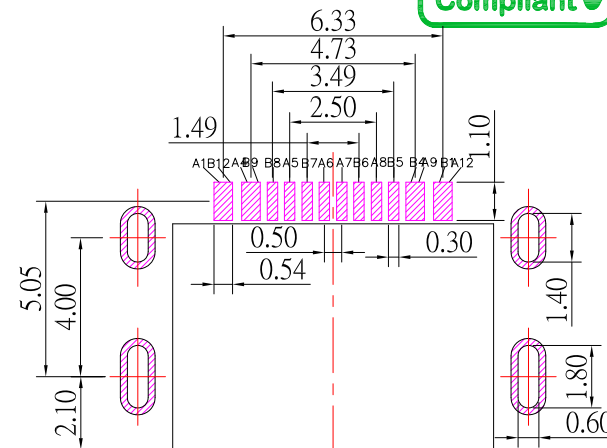
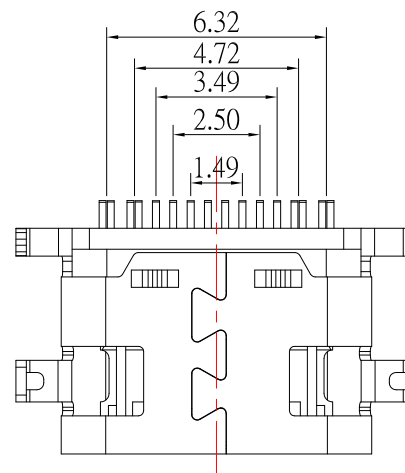
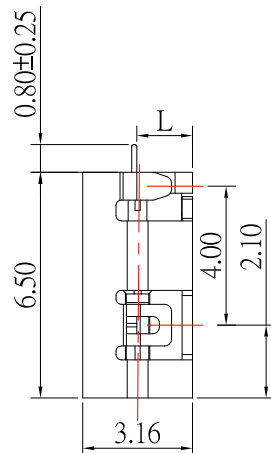
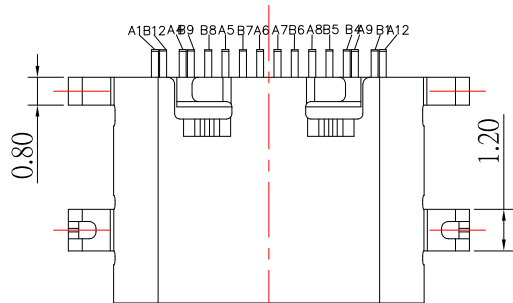
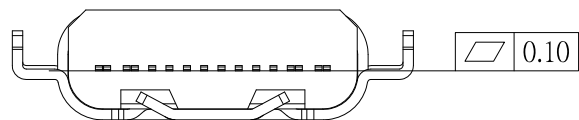


# SBC-160M15x-20x-S410

	A	B	C	D
L	0.80	1.00	1.20	1.60
Housing Material	LCP	PA9T		

鍍層厚度:

Blank	: 1u"
2	: 15u"
3	: 30u"



A1	GND	B12	GND
A2		B11	
A3		B10	
A4	VBUS	B9	VBUS
A5	CC1	B8	SBU 2
A6	D+	B7	D-
A7	D-	B6	D+
A8	SBU1	B5	CC 2
A9	VBUS	B4	VBUS
A10		B3	
A11		B2	
A12	GND	B1	GND

## SPECIFICATIONS

### Electrical:

1. Rating: 5.0 A
2. Dielectric Withstand Voltage: 100V AC
3. Contact Resistance: 40 mΩ Max
4. Insulation Resistance: 100 MΩ Min

### Mechanical:

1. Connector Mate and Unmate Force
  - 1.1 Mate force: 5~20 N
  - 1.2 Unmate force: 8~20 N

### Material:

1. Housing: High-Plastic
2. Contact: C7025
3. Shell: SUS

### Finish:

1. Contact: Plated Gold in Mating Area ;  
Gold Plated on Solder Balls ;  
Nickel under plated overall
2. Shell: Nickel under Plated surface layer

**CONTACT** 建倚科技股份有限公司  
CONTACT TECHNOLOGY CORP.

TOLERANCE UNLESS OTHERWISE STATED:

Up to 5 ±0.2  
Above 5 ~ 15 ±0.3  
Above 15 ~ 30 ±0.4  
Above 30 ~ 50 ±0.5  
Angle ±0.3°

3RD. ANGEL'S



UNITS MM

DRAWN BY:	DATE	MAT'L	TITLE	CONNECTOR
Jack Lu	02/22/24			
CHECKED BY:	DATE	FINISH	MODLE	USB C TYPE 2.0 母座沉板
Jacky Chen	02/22/24			
APPROVED BY:	DATE	SCALE	DWG NO.	SBC-160M15x-20x-S410
Tony Kao	02/22/24	1 : 1	PART NO.	SBC-160M15x-20x-S410
		SHEET NO.	1 of 1	
				SIZE A4
				VER R2

ITEM NO.	DESCRIPTION	DRAWN	DATE
2	更新材質	Jack	022224
1	更新材質:Housing: LCP	Jack	081822